

# Suntory Group

# Corporate Overview Fact Sheet

# 2024

Corporate Overview / Products and Services / Business Highlight



## Corporate Overview

### Suntory Group

Group companies: 270 (as of December 31, 2023)

Employees: 41,511 (as of December 31, 2023)

Consolidated Revenue: ¥2,952.1 billion (January 1 to December 31, 2023)  
(excluding excise taxes)

Consolidated Revenue: ¥3,285.1 billion (January 1 to December 31, 2023)  
(including excise taxes)

Consolidated Operating Income: ¥317.2 billion (January 1 to December 31, 2023)

### Suntory Holdings Limited

Head Office: 2-1-40 Dojimahama, Kita-ku, Osaka City, Osaka, Japan

Suntory World Headquarters: 2-3-3 Daiba, Minato-ku, Tokyo, Japan

Inauguration of business: 1899

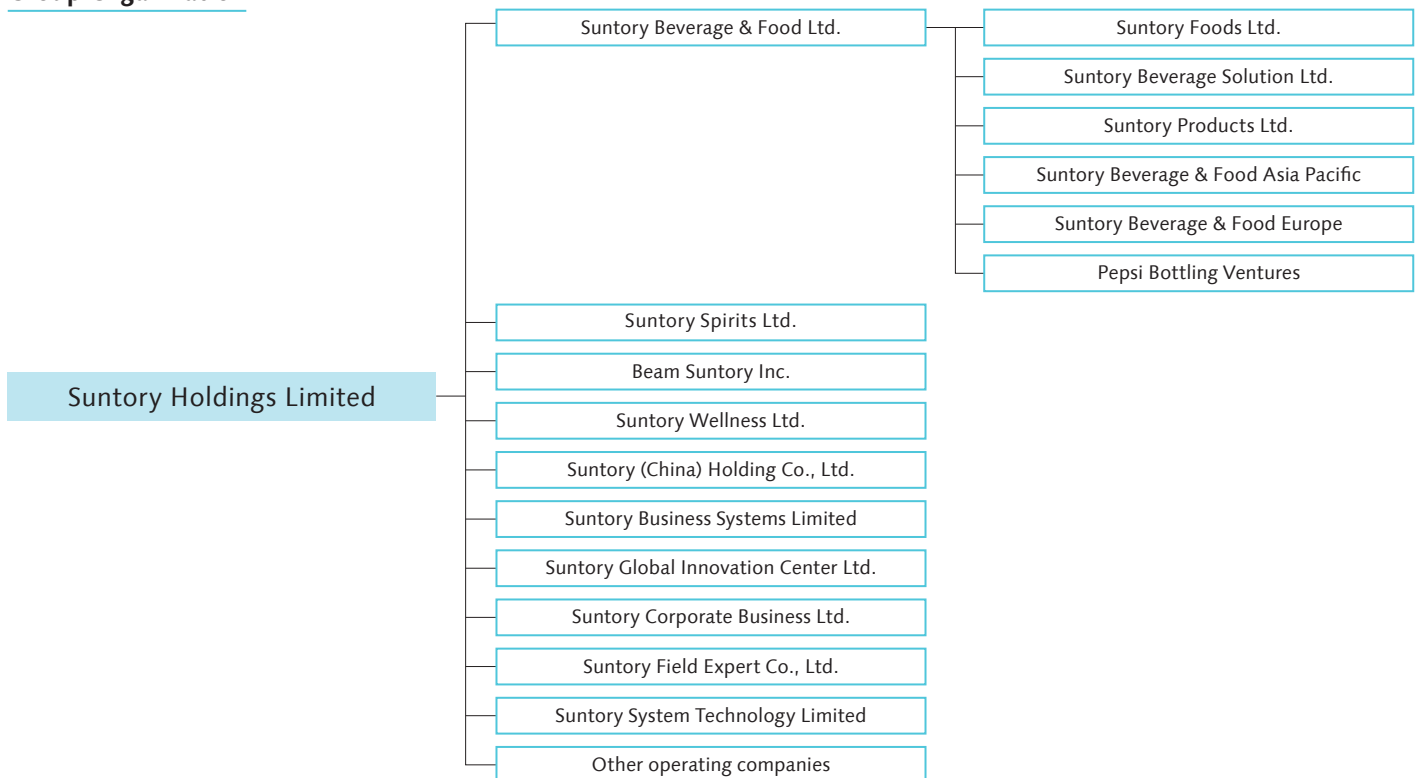
Establishment: February 16, 2009

Representative Director,  
Chairman of the Board & Chief Executive Officer: Nobutada Saji

Representative Director,  
President & Chief Executive Officer: Takeshi Niinami

Capital: ¥70 billion

### Group Organization





# Products and Services

Non-alcoholic Beverage and Food Business/Alcoholic Beverage Business

## Non-alcoholic Beverage and Food Business

We deliver a wide range of products including mineral water, coffee, tea, carbonated drinks, sports drinks and healthy drinks. We manufacture and sell these non-alcoholic beverages and foods globally, such as in Japan, Asia Pacific, Europe, and America, etc.



### Group Companies

#### Suntory Beverage & Food Ltd.

##### Japan

Suntory Foods Ltd.  
Suntory Beverage Solution Ltd.  
Suntory Products Ltd.

##### Asia Pacific

Suntory PepsiCo Vietnam Beverage  
Suntory PepsiCo Beverage Thailand  
Suntory Beverage & Food Cluster Asia  
Suntory Wellness Asia Pacific Pte. Ltd.  
Frucor Suntory

##### Europe

Suntory Beverage & Food France  
Suntory Beverage & Food Great Britain and Ireland  
Suntory Beverage & Food Spain  
Suntory Beverage & Food Europe, Export and Commercial Markets & Benelux

##### Americas

Pepsi Bottling Ventures LLC

## Alcoholic Beverage Business

We are aiming for further growth through ceaseless challenges since our founding in the production and sales of wine in 1899, including the creation of Japan's first authentic whisky and expansion into beer brewing business. We deliver various products around the world as a comprehensive alcohol beverage company.



### Group Companies

#### Beam Suntory Inc.

#### Suntory Spirits Ltd.

Suntory Allied Ltd.  
Suntory Chita Distillery Ltd.  
Osumisyuzo Ltd.  
Okinawa Suntory Ltd.  
Fwines Co., Ltd.  
Iwanohara Vineyard Co., Ltd.  
Vinos Yamazaki Co., Ltd.  
Château Lagrange S.A.S.  
Grands Millésimes de France S.A.S.(GMdF)  
Château Beychevelle  
Château Beaumont  
Barrière Frères S.A.S  
Weingut Robert Weil



# Products and Services

Health Foods, Restaurants, Flowers, Services and Others/Cross-functional Companies/ Arts, Culture, Academic Foundations and Social Welfare Organization

## Health Foods, Restaurants, Flowers, Services and Others

We are involved in various kinds of business, such as the manufacture and sales of ice cream, restaurant businesses in Japan and overseas. Moreover, we also engage in the development of a variety of products which are based on our polyphenol research and biotechnology, environmental greening businesses in China, and reception services in cultural facilities.



### Group Companies

- Suntory Wellness Ltd.**  
Connecto Co., Ltd.  
Suntory Concierge Service Limited
- DYNAC HOLDINGS CORPORATION**  
Pronto Corp.
- Izutsu Maisen Co., Ltd.**  
Restaurant Suntory Mexico Group  
Suntory F&B International Group  
SUNTORY Japanese Cuisine & Whisky Honolulu  
SUNTORY Japanese Cuisine & Whisky Shanghai
- Suntory Flowers Ltd.**  
TOYOTA SUNTORY MIDORIE (SHANGHAI) Co., Ltd.
- Suntory Marketing & Commerce Ltd.**  
Suntory Publicity Service Ltd.
- Suntory Investment and Development Ltd.**  
Sun-Ad Co., Ltd.
- Häagen-Dazs Japan, Inc.**  
Monte Bussan K.K.
- Suntory (China) Holding Co., Ltd.**  
ASC Fine Wines Holding Ltd.  
CT Suntory Trading Co.Ltd.

## Cross-functional Companies

We aggregate common operations of the Group companies and take charge of an array of responsibilities from quality assurance, technological development, procurement and logistics, business systems, fundamental research and sales support.



### Group Companies

- Suntory China Quality Assurance Center
- Suntory Coffee Roastery LTD.
- Suntory Malting LTD.
- Suntory Trading Hong Kong LTD.
- SUNTORY LOGISTICS LIMITED
- Suntory MONOZUKURI Expert ASIA PTE. LTD.
- Suntory MONOZUKURI Expert Europe LTD.
- Suntory System Technology Limited
- Suntory Business Systems Limited
- Suntory Global Innovation Center Ltd.
- Suntory Corporate Business Ltd.
- Suntory Field Expert Co., Ltd.



## Arts, Culture, Academic Foundations and Social Welfare Organization

We are actively engaged in cultural and social contribution activities through three foundations that support arts, local culture and academics, a social welfare organization that operates elderly care facilities and child daycare centers, as well as an educational foundation.



### Related Organizations

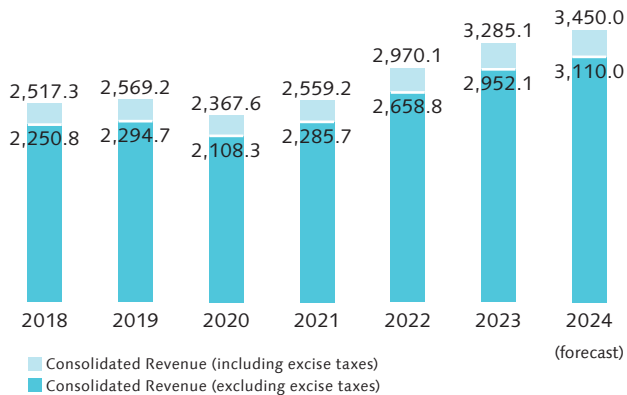
- Suntory Foundation for the Arts**  
Suntory Museum of Art  
Suntory Hall
- Suntory Foundation**  
Suntory Foundation for Life Sciences Bioorganic Research Institute  
Social Welfare Organization Houjukai  
Hibarigaoka Gakuen Educational Foundation



# Business Highlight (IFRS)

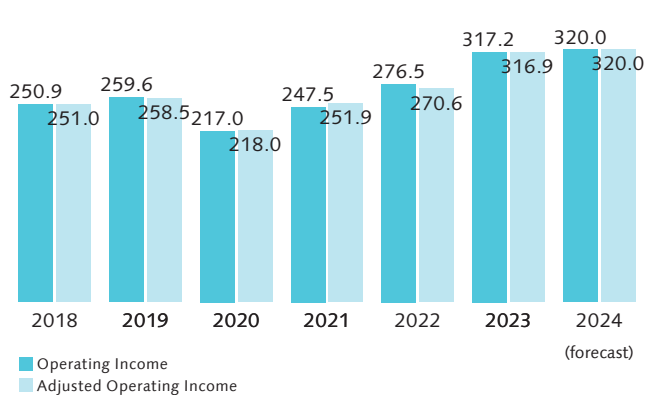
## Consolidated Revenue

(Billion yen)



## Consolidated Operating Income

(Billion yen)



## Sales by Business Segment

### Others

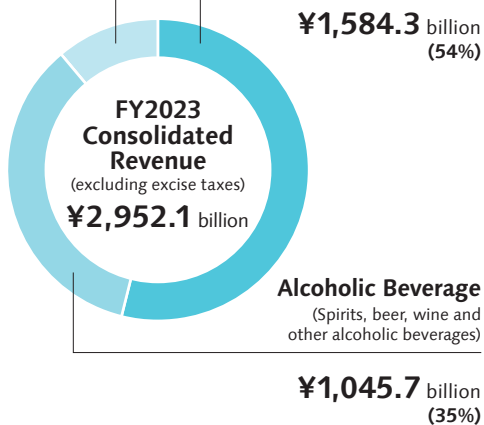
(Health food, ice cream, restaurants, flowers, operations in China and other operations)

¥322.1 billion (11%)

### Beverage and Food

(Non-alcoholic beverages, health drinks, processed food, other products)

¥1,584.3 billion (54%)



### Alcoholic Beverage

(Spirits, beer, wine and other alcoholic beverages)

¥1,045.7 billion (35%)

## Sales by Area

### Asia and Oceania

¥560.6 billion (19%)

### Japan

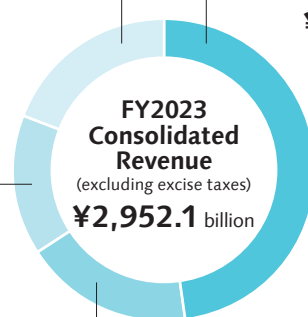
¥1,429.7 billion (48%)

### Europe

¥439.8 billion (15%)

### Americas

¥521.9 billion (18%)



## Number of Group Companies/Employees by Region

As of December 31, 2023

